

# 358 Color Wheel

## Understanding the Copic Color System

The numbers and letters on your marker represent the following:

**Intermediate Classification**  
Color number within color type.  
Variation 0-9

**Broad Classification**  
Shows color type

**Specific Classification/Brightness #**  
Specific variation of color within the intermediate classification.  
Variation 0-9  
(Based on 1-10 with neutral gray brightness)

**Color Name**

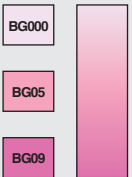
**BG05**  
Holiday Blue

The color/number system helps you choose colors that will blend nicely to create depth in your color range.

### How to pick blending colors

To determine if a color will blend evenly with the next darker or lighter shade, follow the steps below.

**Match the color letters.**  
(Keep the color family the same.)



**Match the middle number.**  
(This will keep the tone the same.)

**The last number indicates how light or dark the shade is.**

For highlights, pick a last number with a value of 0, 1, 2, or 3. For mid tones, choose numbers 4, 5, or 6. For shadows, choose colors with a last number of 7, 8, or 9. For best results, try to keep a 2 or 3 digit difference between your colors.

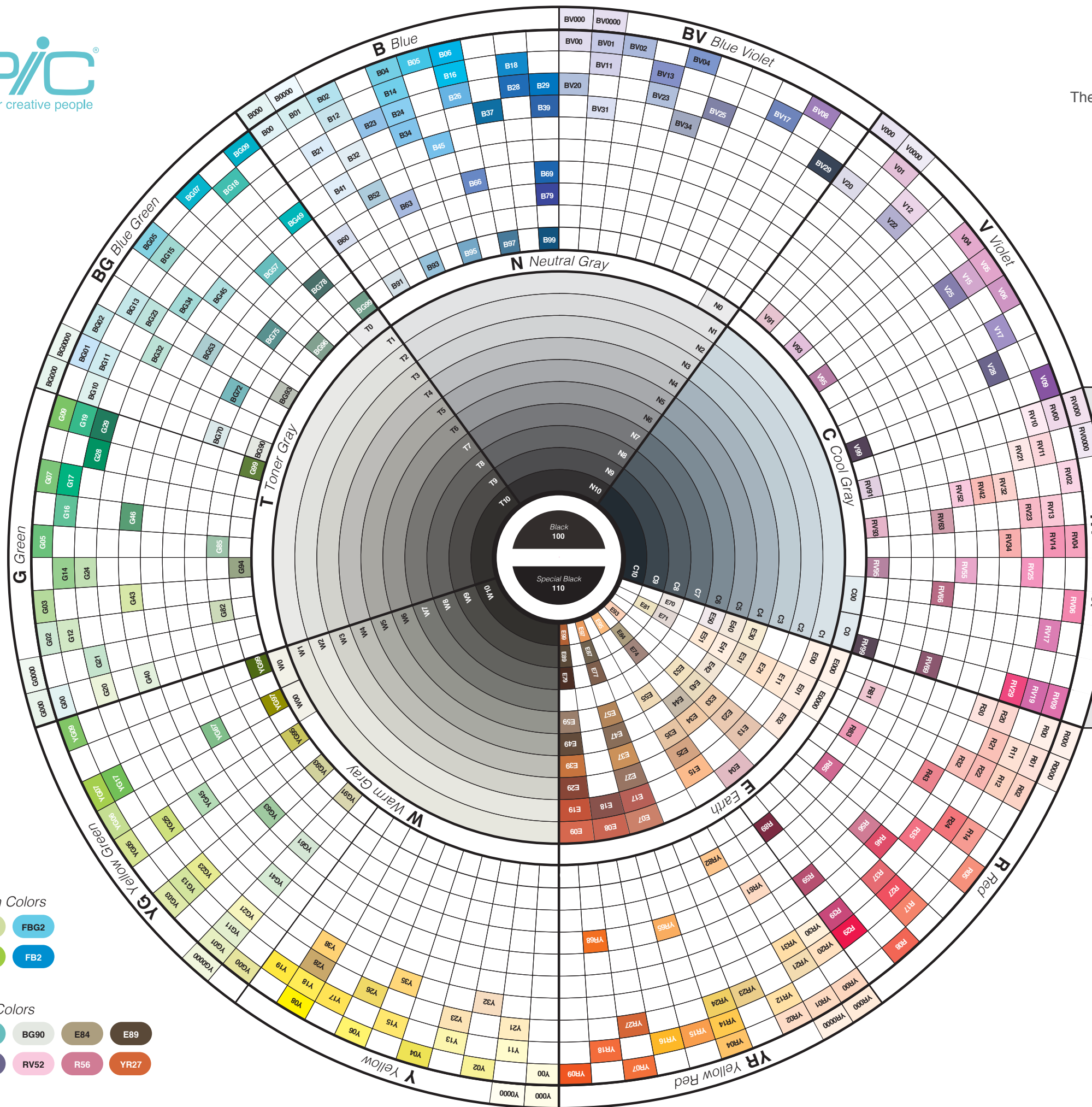
Use more colors to achieve smoother blends

This blend was created with 3 markers:  
BG000      BG05      BG09



For a smoother gradient, use more colors. Notice how much more the pale and dark shades stand out when blended with more colors.

BG000      BG02      BG05      BG07      BG09



### F Fluorescent Sketch Colors



### NEW 2012 Sketch Colors

